

Anti-Neuropeptide Y, NeuroMab clone L115/13

Available as TC supe (RRID: AB_2629421) & Pure IgG (RRID: AB_2651168)

Immunogen:

Fusion protein amino acids 28-97 (all but signal peptide) of human NPY (also known as Neuropeptide Y, Neuropeptide tyrosine, C-flanking peptide of NPY and CPON, accession number P01303)

Rat: 96% identity (67/70 amino acids identical)

Mouse: 94% identity (66/70 amino acids identical)

~50% identity with Peptide YY

Monoclonal antibody info:

Mouse strain: Balb/C

Myeloma cell: SP2/0

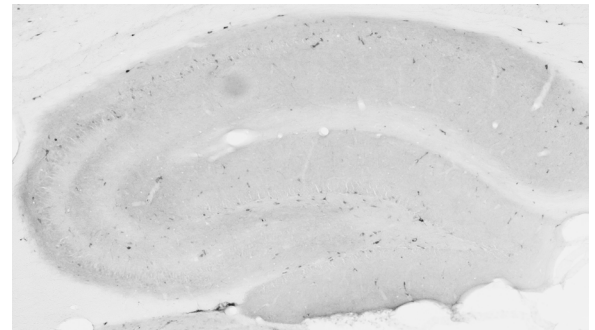
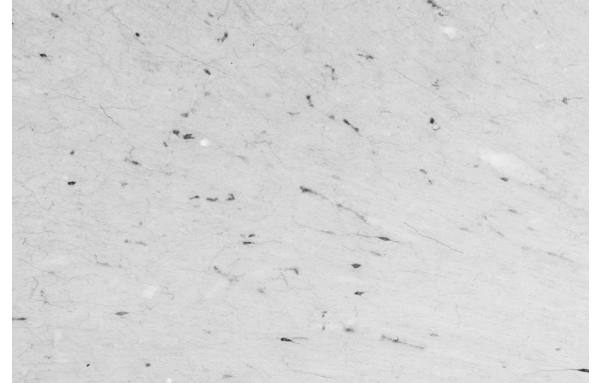
Mouse Ig Isotype: IgG2a

NeuroMab Applications:

Immunocytochemistry, Immunohistochemistry and Array Tomography

Species Reactivity: human, rat, mouse

Adult rat cortex (top) and hippocampus (bottom) immunohistochemistry



Array tomography immunofluorescence of Lowicryl-embedded sections from adult mouse cortex layer 2/3 with L115/13 (green), GABA (red) and DAPI (blue). Volume reconstruction of 35 serial 70 nm sections show two NPY-positive neurons with

varying levels of GABA reactivity, as well as some NPY-reactive axonal varicosities. Images courtesy of Kristina Micheva (Stanford).

