

**Anti-BKBeta4 potassium channel, NeuroMab clone L18A/3****Immunogen:**

Fusion protein amino acids 45-167 (entire extracellular domain) of mouse BKBeta4 (accession number NP\_067427)

Rat: 100% identity (123/123 amino acids identical)

Human: 95% identity (117/123 amino acids identical)

**Monoclonal antibody info:**

Mouse strain: Balb/C

Myeloma cell: SP2/0

Mouse Ig Isotype: IgG2a

**NeuroMab Applications:**

Immunoblotting, Immunohistochemistry and Immunoprecipitation

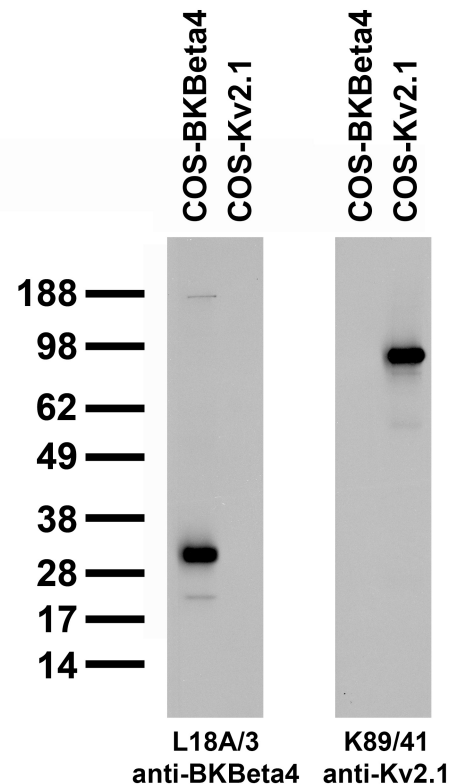
Not yet validated for use in mammalian brain

Species Reactivity: human, mouse, rat

No cross-reactivity against BKBeta1, BKBeta2 or BKBeta3

MW: 24 kD

Transfected cell immunoblot: extracts of COS-1 cells transiently transfected with BKBeta4 or Kv2.1 plasmids and probed with L18A/3 pure IgG at 10 µg/mL (left panel) or K89/41 TC supe (right panel).



Adult rat hippocampus immunohistochemistry

