

### Anti-DLX1 transcription factor, NeuroMab clone L43/40

Available as TC supe (RRID:AB\_10671701) and Pure IgG (RRID:AB\_2093122)

#### Immunogen:

Synthetic peptide amino acids 53-74 (PDGAYSSASSFSRPLGYVNS) of human DLX1 also known as distal-less homeobox protein 1, accession number P56177)

Rat: 100% identity (22/22 amino acids identical)

Mouse: 100% identity (22/22 amino acids identical)

#### Monoclonal antibody info:

Mouse strain: Balb/C

Myeloma cell: SP2/0

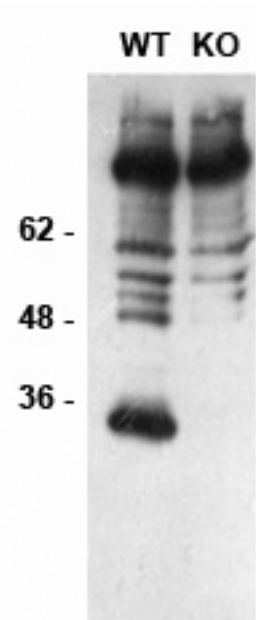
Mouse Ig Isotype: IgG2a

#### NeuroMab Applications:

Immunoblotting, Immunohistochemistry and Immunoprecipitation

Species Reactivity: human, mouse, rat

MW: 27 kD



Immunoblot versus whole cell extracts from embryonic day 15 telencephalon from DLX1/2 wild-type (WT) and knockout (KO) mice. Data courtesy of Dr. Mario Hernan and Dr. John Rubenstein, UCSF.

Adult rat hippocampus immunohistochemistry

