



Anti-Snapin (SNAP25 binding protein), NeuroMab clone L8/15

Immunogen:

Synthetic peptide of amino acids 115-136 of human snapin (KETARRRAMLDSGIYPPGSPGK; accession number Q95295)

Rat: 95% identity (21/22 amino acids)

Mouse: 95% identity (21/22 amino acids)

Monoclonal antibody info:

Mouse strain: Balb/C

Myeloma cell: SP2/0

Mouse Ig Isotype: IgG1

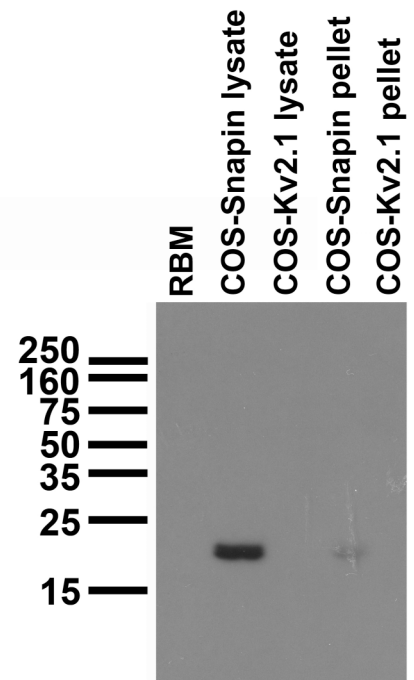
NeuroMab Applications:

Immunoblotting, Immunohistochemistry and Immunoprecipitation

Species Reactivity: human, mouse, rat

MW: 20 kD

Immunoblot on adult rat brain membrane (RBM) and samples from transfected COS cells



Adult rat hippocampus (left) and cortex (right) immunohistochemistry

