

Anti-PSD-93/Chapsyn-110 scaffold protein, NeuroMab clone N18/28

Available as TC supe (RRID: AB_11000722) & Pure IgG (RRID: AB_11001825)

Immunogen:

Fusion protein amino acids 1-852 (full-length) of rat Chapsyn-110 (also known as Channel-associated protein of synapse-110, Postsynaptic density protein PSD-93, Disks large homolog 2, Dlg2 and DlgH2, accession number Q63622)

Mouse: 99% identity (846/852 amino acids identical)

Human: 94% identity (826/870 amino acids identical)

>60% identity with other MAGUK family members (SAP97/Dlg1, SAP102/Dlg3 and PSD-95/Dlg4)

Monoclonal antibody info:

Mouse strain: Balb/C

Myeloma cell: SP2/0

Mouse Ig Isotype: IgG2a

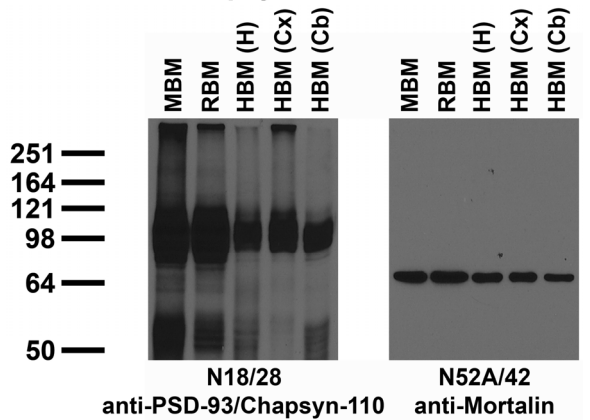
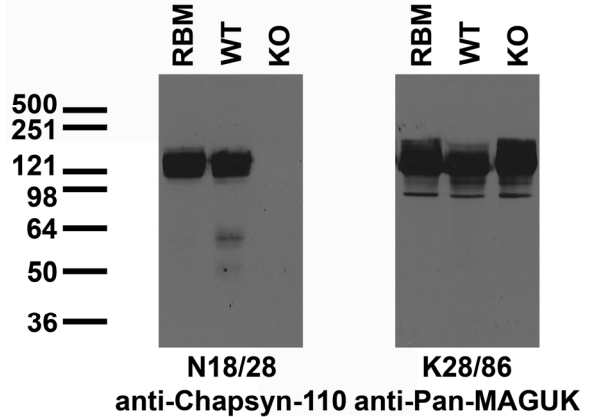
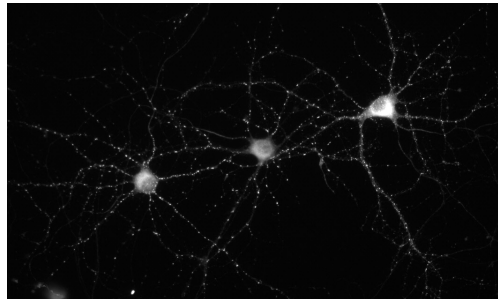
NeuroMab Applications:

Immunoblot, Immunocytochemistry and Immunohistochemistry

Species Reactivity: rat, mouse, human

Does not cross-react with SAP97, SAP102 or PSD-95

MW: 110 kDa



Top: immunoblot against crude membrane preparations from adult rat brain (RBM) or hippocampi from adult wild-type (WT) or PSD-93/Chapsyn-110 knockout (KO) mice probed with N18/28 (left) or K28/86 (right) TC supe. Mouse samples courtesy of Richard Huganir (Johns Hopkins University).

Center left: immunofluorescence staining of 14 DIV cultured rat hippocampal neurons.

Center right: immunoblot against crude membranes from whole adult mouse brain (MBM) or rat brain (RBM) and from human hippocampus [HBM(H)], cerebral cortex [HBM(Cx)] or cerebellum [HBM(Cb)] probed with N18/28 (left) or N52A/42 (right) TC supe.

Bottom: adult rat brain hippocampus (upper) and cerebellum (lower) immunohistochemistry.

