



Anti-SynCAM4, NeuroMab clone N244/5

Immunogen:

Fusion protein amino acids 1-321 (signal peptide and extracellular N-terminus) of mouse SynCAM4 (also known as Cell adhesion molecule 4, Immunoglobulin superfamily member 4C, Nectin-like protein 4, TSLC1-like protein 2, Cadm4, Igsf4c, Necl4 and Tsl12, accession number Q8R464)

Rat: 99% identity (319/321 amino acids identical)

Human: 98% identity (316/321 amino acids identical)

~30-40% identity with SynCAM1, SynCAM2 and SynCAM3

Monoclonal antibody info:

Mouse strain: Balb/C

Myeloma cell: SP2/0

Mouse Ig Isotype: IgG1

NeuroMab Applications:

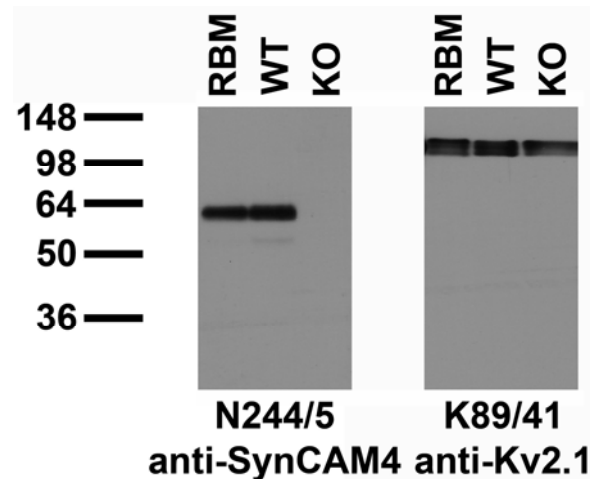
Immunoblot and Immunocytochemistry

Species Reactivity: mouse, rat, human

Does not cross-react with other SynCAMs (based on KO validation results)

MW: 43 kDa

Immunoblot versus adult rat brain membranes (RBM) and adult mouse brain membranes from wild-type (WT) and SynCAM4 knockout (KO) mice and probed with N244/5 (left) and K89/41 (right) TC supe. Samples courtesy of Matt Rasband, Baylor College of Medicine.



Adult rat sciatic nerve immunofluorescence staining: paranodes labeled with N244/5 (red) surround nodes of Ranvier labeled with Beta-IV spectrin (green) (image on right is cross-section of a similar image of left). Images courtesy of Matt Rasband (Baylor College of Medicine).

