



Anti-Synaptotagmin-6, NeuroMab clone N270/47

Available as TC supe (RRID: AB_11000182) & Pure IgG (RRID: AB_11001830)

Immunogen:

Fusion protein amino acids 246-333 (cytoplasmic C2A domain) of mouse Synaptotagmin-6 (also known as Syt6, Synaptotagmin VI and SytVI, accession number Q9R0N8)

Human: 100% identity (88/88 amino acids identical)

Rat: 100% identity (88/88 amino acids identical)

>70% identity with Synaptotagmin-10, Synaptotagmin-3 and Synaptotagmin-9

Monoclonal antibody info:

Mouse strain: Balb/C

Myeloma cell: SP2/0

Mouse Ig Isotype: IgG1

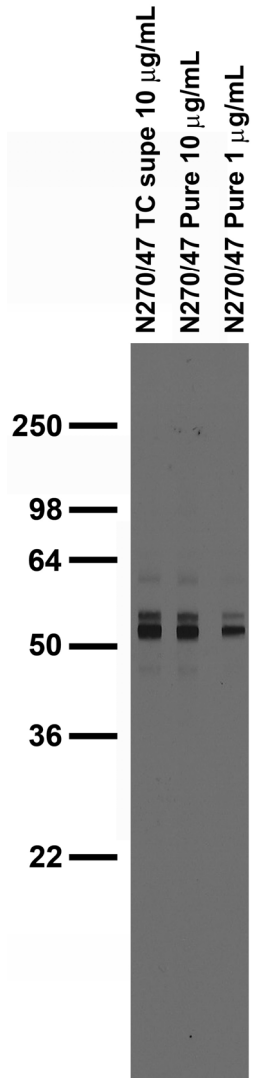
NeuroMab Applications:

Immunoblot and Immunocytochemistry

Species Reactivity: mouse, rat, human

Does not cross-react with other Synaptotagmins

MW: 55 kDa



Adult rat brain membrane immunoblot

COS-Syt1-GFP
 COS-Syt2-GFP
 COS-Syt3-GFP
 COS-Syt4-GFP
 COS-Syt5-GFP
 COS-Syt6-GFP
 COS-Syt7-GFP
 COS-Syt8-GFP
 COS-Syt9-GFP
 COS-Syt10-GFP
 COS-Syt11-GFP
 COS-Syt12-GFP
 COS-Kv2.1
 COS-Syt1-GFP
 COS-Syt2-GFP
 COS-Syt3-GFP
 COS-Syt4-GFP
 COS-Syt5-GFP
 COS-Syt6-GFP
 COS-Syt7-GFP
 COS-Syt8-GFP
 COS-Syt9-GFP
 COS-Syt10-GFP
 COS-Syt11-GFP
 COS-Syt12-GFP
 COS-Kv2.1

Transfected cell immunoblot: extracts of COS cells transiently transfected with GFP-tagged Synaptotagmin or untagged Kv2.1 plasmids and probed with N270/47 (left) and N86/8 (right).

