



Anti-Arl13b, NeuroMab clone N295B/66

Available as TC supe (RRID: AB_11000053) & Pure IgG (RRID: AB_2341543)

Immunogen:

Fusion protein amino acids 208-427 (C-terminus) of mouse Arl13b (also known as ADP-ribosylation factor-like protein 13B, ADP-ribosylation factor-like protein 2-like 1, ARL2-like protein 1 and Arl211, accession number Q640N2)

Rat: 85% identity (189/220 amino acids identical)

Human: 68% identity (154/224 amino acids identical)

<40% identity with Arl13a

Monoclonal antibody info:

Mouse strain: Balb/C

Myeloma cell: SP2/0

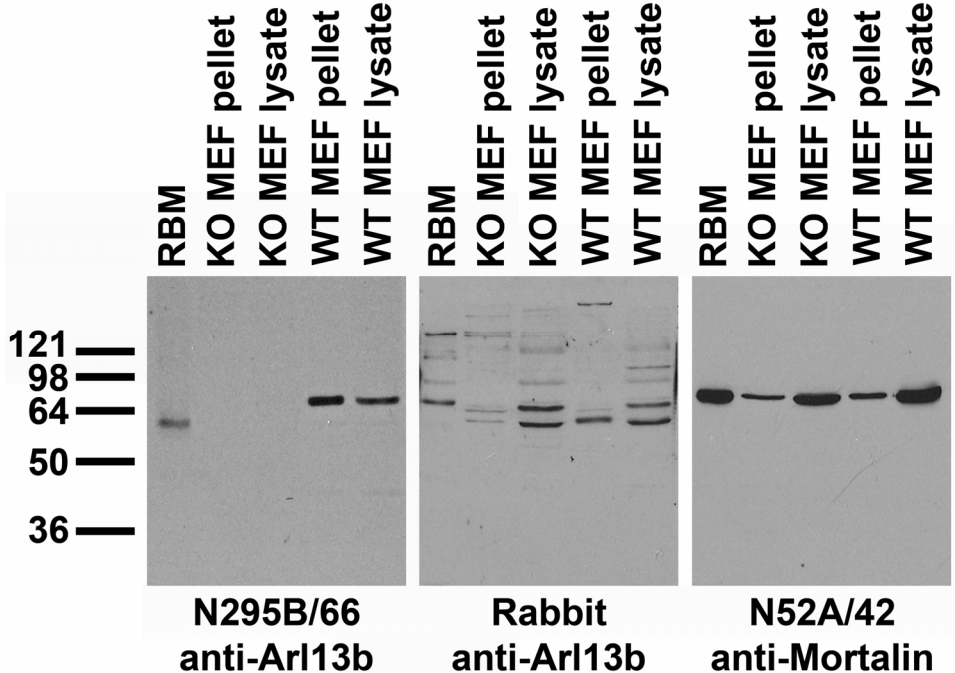
Mouse Ig Isotype: IgG2a

NeuroMab Applications:

Immunoblot, Immunocytochemistry and Immunohistochemistry

Species Reactivity: mouse, rat

MW: 60 kDa



Top: immunoblot versus crude membranes from adult rat brain (RBM) and pellet/lysate fractions of wild-type (WT) and Arl13b knockout (KO) mouse embryonic fibroblasts (MEF) probed with N295B/66 TC supe (left), rabbit polyclonal (middle) and N52A/42 TC supe (right). MEF cells courtesy of Laura Mariani and Tamara Caspary (Emory University SOM).

Middle: adult rat brain immunohistochemistry of ciliated cells surrounding the lateral ventricle (LV).

Bottom: immunofluorescence staining of adult rat brain sections with N295B/66 (red, cilia) and N147/6 (green) TC supe.

