**Anti-BBS3/Arl6, NeuroMab clone N302/10**

Available as TC supe (RRID: AB_10999750) & Pure IgG (RRID: AB_11000170)

Immunogen:

Fusion protein amino acids 1-186 (full-length) of human ADP-ribosylation factor-like protein 6 (also known as Arl6 and Bardet-Biedl syndrome 3 protein, accession number Q9H0F7)

Mouse: 95% identity (178/186 amino acids identical)

Rat: 95% identity (177/186 amino acids identical)

<50% identity with ADP-ribosylation factor 3

Monoclonal antibody info:

Mouse strain: Balb/C

Myeloma cell: SP2/0

Mouse Ig Isotype: IgG1

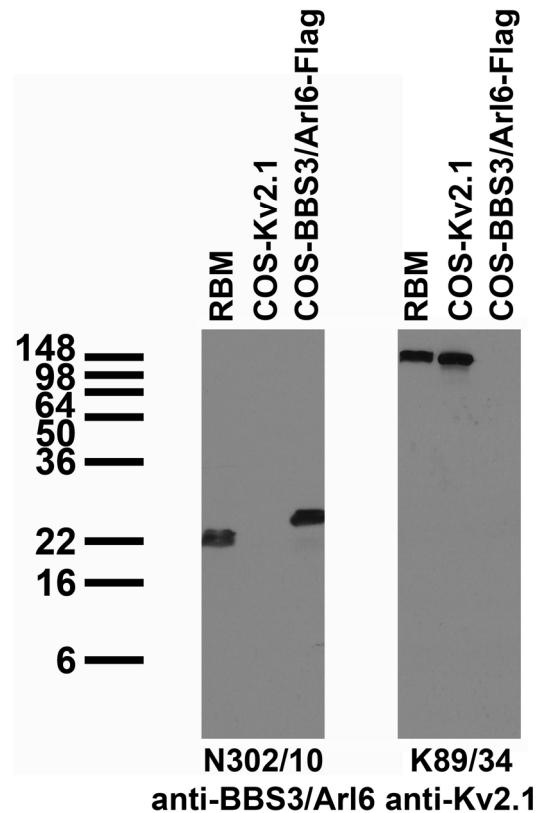
NeuroMab Applications:

Immunoblot, Immunocytochemistry and Immunohistochemistry

Species Reactivity: human, rat, mouse

MW: 20 kDa

Tissue and transfected cell immunoblot: extracts of rat brain membrane (RBM) and COS cells transiently transfected with Flag-tagged BBS3/Arl6 or untagged Kv2.1 plasmid and probed with N302/10 (left) and K89/34 (right) TC supe.



Adult rat brain
immunohistochemistry

