

Anti-LRRK1, NeuroMab clone N341/12

Available as TC supe (RRID: AB_2315879) & Pure IgG (RRID: AB_2315880)

Immunogen:

Fusion protein amino acids 1695-2015 (C-terminus) of human LRRK1 (also known as Leucine-rich repeat serine/threonine-protein kinase 1 and KIAA1790, accession number Q38SD2)

Mouse: 81% identity (263/321 amino acids identical)

Rat: 79% identity (254/321 amino acids identical)

<50% identity with LRRK2

Monoclonal antibody info:

Mouse strain: Balb/C

Myeloma cell: SP2/0

Mouse Ig Isotype: IgG1

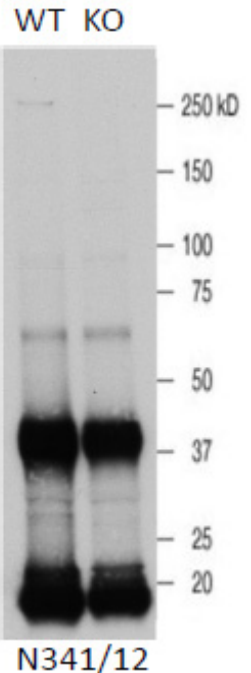
NeuroMab Applications:

Immunoblot and Immunocytochemistry

Species Reactivity: human, mouse

Does not cross-react with LRRK2

MW: >200 kDa



Immunoblot versus LRRK1-immunoprecipitated extracts from WT and LRRK1 KO mouse heart probed with N341/12 TC supe. Data courtesy of Paul Davies and Dario Alessi (University of Dundee, Scotland, UK).

Transfected cell immunoblot: extracts of COS cells transiently transfected with Myc-tagged LRRK1, LRRK2 or untagged Kv2.1 plasmid and probed with N341/12 (left) or N241A/34 (right) TC supe.

