

Anti-REEP1, NeuroMab clone N345/51

Available as TC supe (RRID: AB_2315912) & Pure IgG (RRID: AB_2315913)

Immunogen:

Fusion protein amino acids 111-201 (KDRSYDALVHFGKRGLNVAATAAVMAASKGQGALSERLRS FSMQDLTTIRGDGAPAPSGPPPPGTGRSSGKHSQPMSRSASESAGSSGTA, cytoplasmic C-terminus) of mouse REEP1 (also known as Receptor expression-enhancing protein 1, C2orf23, D6Ert253e and rCG_56072, accession number Q8BGH4)

Rat: 97% identity (89/91 amino acids identical)

Human: 95% identity (87/91 amino acids identical)

Monoclonal antibody info:

Mouse strain: Balb/C

Myeloma cell: SP2/0

Mouse Ig Isotype: IgG2b

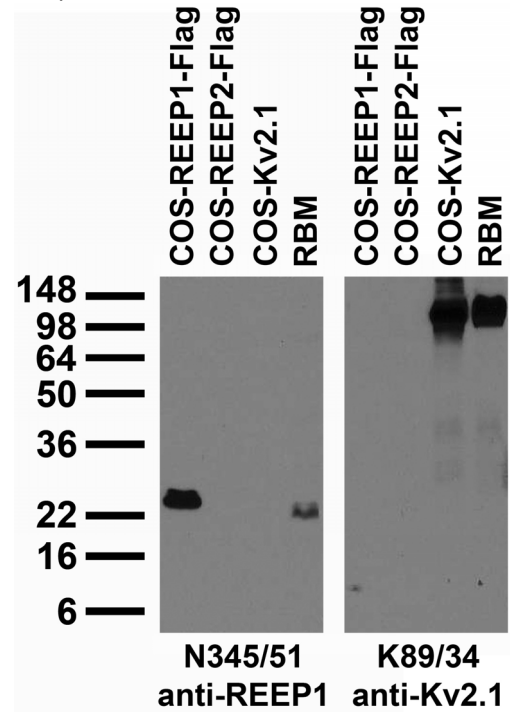
NeuroMab Applications:

Immunoblot, Immunocytochemistry and Immunohistochemistry

Species Reactivity: mouse, rat

MW: 22 kDa

Top: tissue and transfected cell immunoblot: extracts of rat brain membrane (RBM) and COS cells transiently transfected with Flag-tagged REEP1, REEP2 or untagged Kv2.1 plasmid and probed with N345/51 (left) and K89/34 (right) TC supe.



Bottom right: immunoblot against crude membranes from whole mouse (MBM) or rat (RBM) brain and from human hippocampus [HBM(H)], cerebellum [HBM(Cb)] or cerebral cortex [HBM(Cx)] and probed with N345/51 (left) or N52A/42 (right) TC supe.

Bottom left: adult rat brain immunohistochemistry (with antigen retrieval via sodium citrate pretreatment)

