



### Anti-NSD3, NeuroMab clone N348/82

Available as TC supe (RRID: AB\_2315901) & Pure IgG (RRID: AB\_2315902)

#### Immunogen:

Fusion protein amino acids 21-251 (N-terminus) of human NSD3 (also known as Nuclear SET domain-containing protein 3, Histone-lysine N-methyltransferase, Wolf-Hirschhorn syndrome candidate 1-like protein 1, WHSC1-like protein 1, WHSC1-like 1 isoform 9 with methyltransferase activity to lysine, WHSC1L1, Protein whistle and DC28, accession number Q9BZ95)

Mouse: 92% identity (214/231 amino acids identical)

Rat: 90% identity (208/231 amino acids identical)

<50% identity with NSD1 and NSD2

#### Monoclonal antibody info:

Mouse strain: Balb/C

Myeloma cell: SP2/0

Mouse Ig Isotype: IgG1

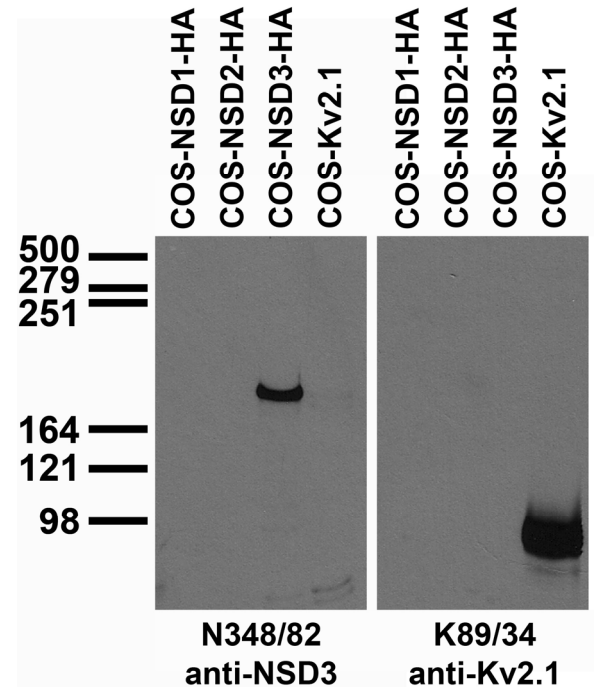
#### NeuroMab Applications:

Immunoblot, Immunocytochemistry and Immunohistochemistry

Species Reactivity: human, rat, mouse

MW: >160 kDa

Transfected cell immunoblot: extracts of COS cells transiently transfected with HA-tagged NSD1, NSD2, NSD3 or untagged Kv2.1 plasmid and probed with N348/82 (left) and K89/34 (right) TC supe.



Adult rat hippocampus immunohistochemistry

