**Anti-Navbeta2 Na<sup>+</sup> channel, NeuroMab clone N395/68**

Available as TC supe (RRID: AB\_2315895) &amp; Pure IgG (RRID: AB\_2315896)

Immunogen:

Fusion protein amino acids 1-215 (full-length) of mouse Navbeta2 (also known as Sodium channel subunit beta-2, Scn2b, UNQ326/PRO386 and Gm183, accession number Q56A07)

Rat: 97% identity (209/215 amino acids identical)

Human: 92% identity (198/215 amino acids identical)

&lt;30% identity with Navbeta1, Navbeta3 or Navbeta4

Monoclonal antibody info:

Mouse strain: Balb/C

Myeloma cell: SP2/0

Mouse Ig Isotype: IgG2b

NeuroMab Applications:

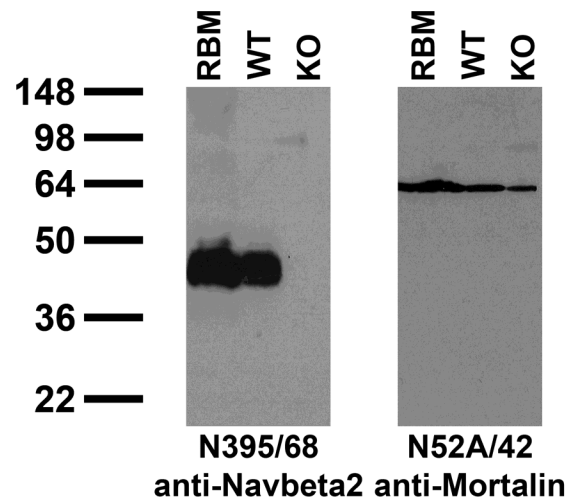
Immunoblot, Immunocytochemistry and Immunohistochemistry

Species Reactivity: mouse, rat

Does not cross-react with Navbeta1, Navbeta3 or Navbeta4  
(based on KO validation results)

MW: 40 kDa

Immunoblot against crude membranes from adult rat brain (RBM) and wild-type (WT) and Navbeta2 knockout (KO) mouse brains probed with N395/68 (left) and N52A/42 (right) TC supe. Mouse brains courtesy of Lori Isom (University of Michigan).



Adult rat hippocampus immunohistochemistry

