

### Anti-Navbeta3 Na<sup>+</sup> channel, NeuroMab clone N396/29

Available as TC supe (RRID: AB\_2336910) & Pure IgG (RRID: AB\_2491090)

#### Immunogen:

Fusion protein amino acids 1-215 (full-length) of rat Navbeta3 (also known as Sodium channel subunit beta-3, Scn3b and KIAA1158, accession number Q9JK00)

Mouse: 99% identity (214/215 amino acids identical)

Human: 98% identity (211/215 amino acids identical)

<50% identity with Navbeta1, Navbeta2 or Navbeta4

#### Monoclonal antibody info:

Mouse strain: Balb/C

Myeloma cell: SP2/0

Mouse Ig Isotype: IgG2b

#### NeuroMab Applications:

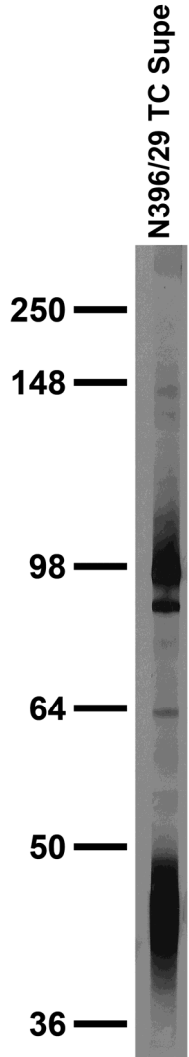
Immunoblot and Immunocytochemistry

Species Reactivity: rat, mouse

Does not cross-react with Navbeta1, Navbeta2 or Navbeta4

MW: 40 kDa

Adult rat brain membrane immunoblot



Transfected cell immunoblot:  
 extracts of COS cells transiently transfected with GFP-tagged Navbeta1, V5/His-tagged Navbeta2, V5/His-tagged Navbeta3, GFP-tagged Navbeta4 or untagged Kv2.1 plasmid and probed with mouse anti-V5 (center), N396/29 (left) and N52A/42 (right) TC supes.

