



### Anti-MESD, NeuroMab clone N88/12

Available as TC supe (RRID: AB\_10673280) & Pure IgG (RRID: AB\_2143727)

#### Immunogen:

Fusion protein amino acids 30-95 and 118-180 (lacking VSD domain) of mouse MESD (also known as mesoderm development candidate 2, MESD2, MESDC2 and renal carcinoma antigen NY-REN-61, accession number Q9ERE7)

Rat: 88% identity (133/150 amino acids identical)

Human: 84% identity (127/150 amino acids identical)

#### Monoclonal antibody info:

Mouse strain: Balb/C

Myeloma cell: SP2/0

Mouse Ig Isotype: IgG2b

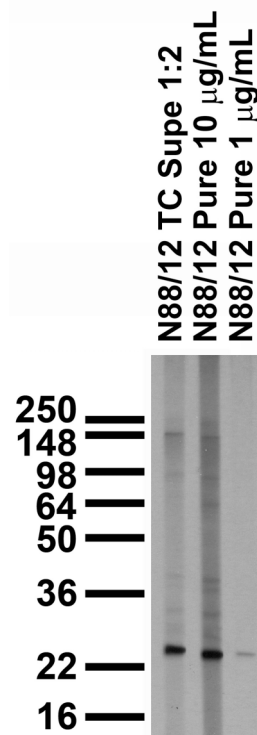
#### NeuroMab Applications:

Immunoblotting, Immunohistochemistry and Immunoprecipitation

Species Reactivity: human, mouse, rat

MW: 26 kD

Adult rat brain membrane immunoblot



Adult rat hippocampus immunohistochemistry

