



Anti-Nav1.2 sodium channel, NeuroMab clone K69/3

Immunogen:

Fusion protein amino acids 1882-2005 (cytoplasmic C-terminus, RFMASNPSKVSYEPI TTTTLKRKQEEVSAIVIQRAYRRYLLKQKVKKVSSIIYKKDKGKEDEGTPIKEDIITD KLNENSTPEKTDVTPSTTSPPSYDSVTKPEKEKFEKDKSEKEDKGKDIRESKK) of rat Voltage-gated sodium channel subunit alpha Nav1.2, Sodium channel protein type 2 subunit alpha, Sodium channel protein brain II subunit alpha, HBSC II, NAC2, Scn2a, Scn2a1, Scn2a2, accession number P04775)

Mouse: 100% identity (124/124 amino acids identical)

Human: 94% identity (117/124 amino acids identical)

>60% identity with Nav1.1, Nav1.3 and Nav1.7

Monoclonal antibody info:

Mouse strain: Balb/C

Myeloma cell: SP2/0

Mouse Ig Isotype: IgG2a

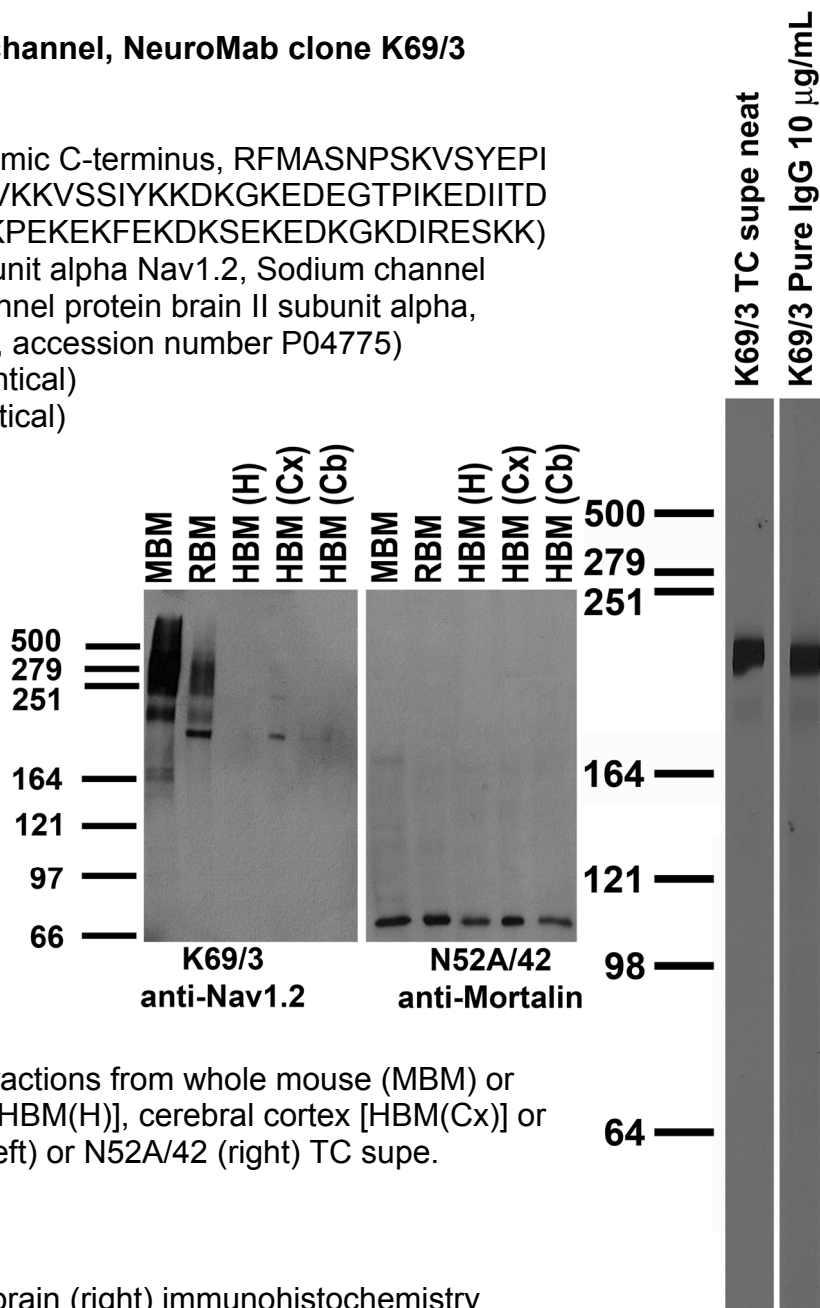
NeuroMab Applications:

Immunoblot, Immunohistochemistry and Immunoprecipitation

Species Reactivity: rat, mouse, human

Does not cross-react with Nav1.1/3/7

MW: 230 kDa



Top left: immunoblot against crude membrane fractions from whole mouse (MBM) or rat (RBM) brain and from human hippocampus [HBM(H)], cerebral cortex [HBM(Cx)] or cerebellum [HBM(Cb)] and probed with K69/3 (left) or N52A/42 (right) TC supe.

Top right: adult rat brain membrane immunoblot

Bottom: adult rat hippocampus (left) and whole brain (right) immunohistochemistry

