

### Anti-Nav1.6 sodium channel, NeuroMab clone K87A/10

#### Immunogen:

Synthetic peptide 459-476 (intracellular interdomain loop I-II) of rat Nav1.6 (accession number NP\_062139)

Human: 88% identity (16/18 amino acids identical)

Mouse=100% identity (18/18 amino acids identical)

#### Monoclonal antibody info:

Mouse strain: Balb/C

Myeloma cell: SP2/0

Mouse Ig Isotype: IgG1

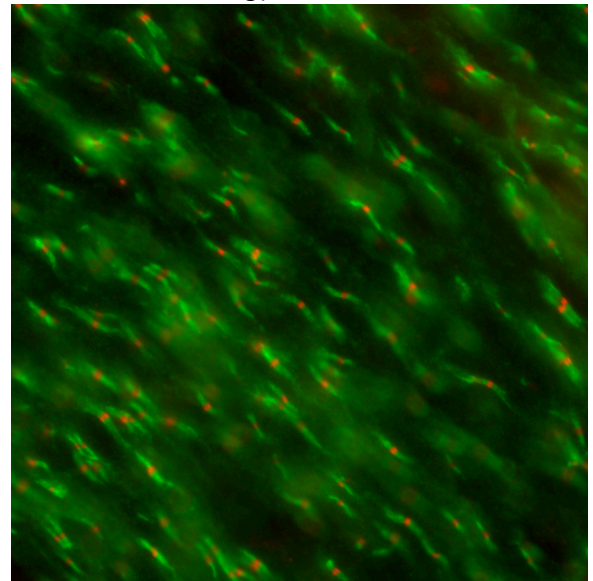
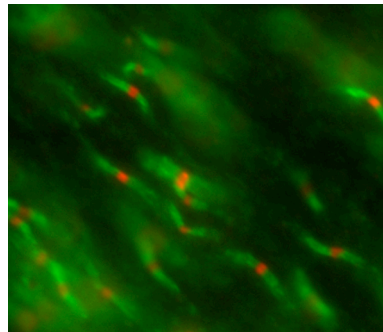
#### NeuroMab Applications:

Immunohistochemistry and Immunoprecipitation (does not work for immunoblotting)

Species Reactivity: human, mouse, rat

MW: K87A/10 does not work for immunoblotting

Adult rat optic nerve  
immunofluorescence staining  
K87A/10=red  
Rabbit anti-Caspr=green  
Image courtesy of Dr. Matthew  
Rasband (Baylor College of  
Medicine).



Cerebellar granule cells, 16 days  
in culture, obtained from wild-type  
(WT) and Nav1.6-null "Null" mice.  
K87A/10=green. DAPI=blue.  
Scale bar = 20  $\mu$ m. Images  
courtesy of Drs. L. M. Sharkey  
and M. H. Meisler, University of  
Michigan School of Medicine.

