



Anti-WAVE1/SCAR, NeuroMab clone K91/36

Immunogen:

Synthetic peptide amino acids 477-498 (CQVIPASEPKRHPSTLPVISDAR) of human WAVE1 (also known as Wiskott-Aldrich syndrome protein family member 1, WASP family protein member 1, Verprolin homology domain-containing protein 1, KIAA0269, WASF1 and SCAR1, accession number Q92558)

Rat: 95% identity (21/22 amino acids identical)

Mouse: 95% identity (21/22 amino acid identical)

<50% identity with WASF3

Monoclonal antibody info:

Mouse strain: Balb/C

Myeloma cell: SP2/0

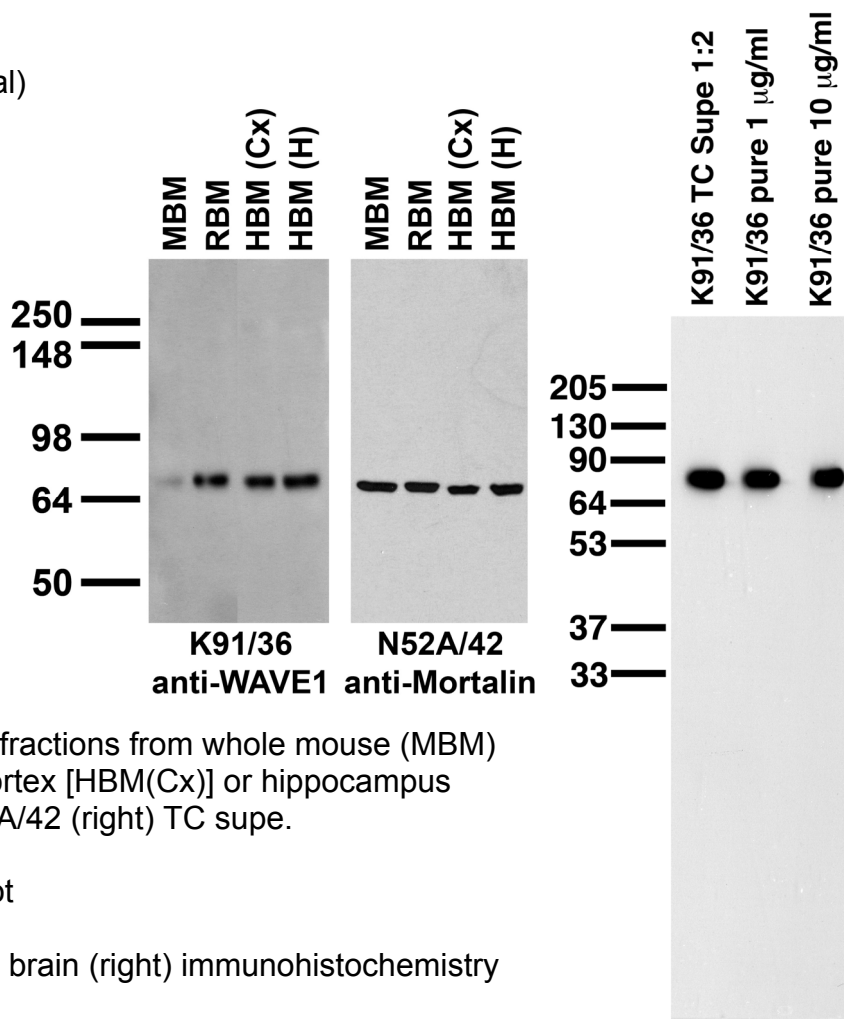
Mouse Ig Isotype: IgG1

NeuroMab Applications:

Immunoblot, Immunohistochemistry and Immunoprecipitation

Species Reactivity: human, mouse, rat

MW: 75 kDa



Top left: immunoblot against crude membrane fractions from whole mouse (MBM) or rat (RBM) brain and from human cerebral cortex [HBM(Cx)] or hippocampus [HBM(H)] and probed with K91/36 (left) or N52A/42 (right) TC supe.

Top right: adult rat brain membrane immunoblot

Bottom: adult rat hippocampus (left) and whole brain (right) immunohistochemistry