

Anti-CALB1/calbindin, NeuroMab clone L109/39

Immunogen:

Fusion protein amino acids 1-261 (full-length) of human CALB1 (also known as Calbindin D28, Vitamin D-dependent calcium-binding protein, D-28K, Spot 35 protein, CAB27 and PCD-29, accession number P05937)

Rat: 98% identity (257/261 amino acids identical)

Mouse: 98% identity (257/261 amino acids identical)

<60% identity with CALB2/Calretinin

Monoclonal antibody info:

Mouse strain: Balb/C

Myeloma cell: SP2/0

Mouse Ig Isotype: IgG2b

NeuroMab Applications:

Immunoblot, Immunocytochemistry, Immunohistochemistry and Array Tomography

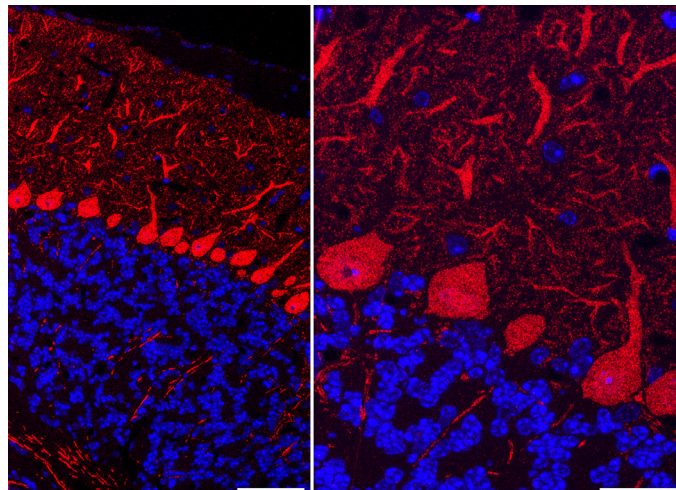
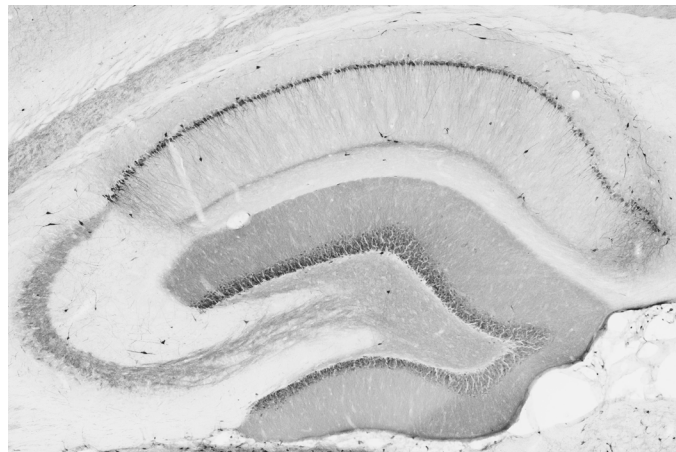
Species Reactivity: human, rat, mouse

MW: 25-35 kDa

Right: adult rat brain membrane immunoblot

Top: adult rat hippocampus immunohistochemistry

Bottom: array tomography immunofluorescence of Lowicryl-embedded sections from adult mouse cerebellum with L109/39 (red) and DAPI (blue). Left panel is a single 70 nm section imaged with a 20X objective, with a scale bar of 50 μ m. Right panel is a MAX projection of 7 serial 70 nm sections imaged with a 63X objective, with a scale bar of 20 μ m. Images courtesy of Kristina Micheva (Stanford).



98 —
64 —
50 —
36 —
22 —
16 —

L109/39 TC supe