

**Anti-Neurabin-1, NeuroMab clone L129/93**Immunogen:

Fusion protein amino acids 1-520 (N-terminus) of mouse Neurabin-1 (also known as Neurabin-I, Neural tissue-specific F-actin-binding protein I, Protein phosphatase 1 regulatory subunit 9A, Protein phosphatase 1 regulatory (Inhibitor) subunit 9A isoform CRA_c, Neb1, Ppp1r9a, mCG_141520, PP1bp175, p180 and KIAA1222, accession number Q7TN74)

Rat: 91% identity (476/521 amino acids identical)

Human: 86% identity (447/520 amino acids identical)

<40% identity with Neurabin-2/Neb2/Ppp1r9b

Monoclonal antibody info:

Mouse strain: Balb/C

Myeloma cell: SP2/0

Mouse Ig Isotype: IgG1

NeuroMab Applications:

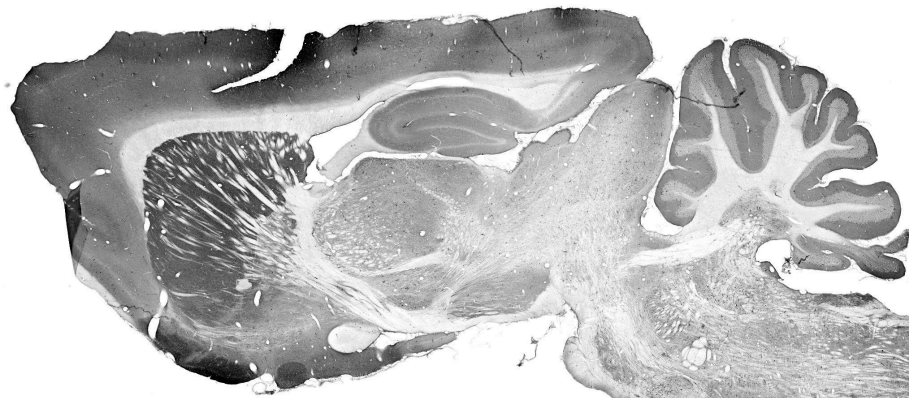
Immunocytochemistry, Immunoblotting, and Immunohistochemistry

Species Reactivity: rat

MW: 120-130 kDa, perhaps smaller isoforms

Top right: adult rat brain membrane immunoblot.

Bottom Center: Adult rat visual cortex (left, note interneurons) and stria terminalis (right) immunohistochemistry



L129/93 TC Supe

150—

102—

76—

52—