



Anti-Cav1.2 pS1928 phospho-specific, NeuroMab clone L132/68

Immunogen:

Synthetic peptide amino acids 1918-1931 (RSASLGRRApSFHLE, ID I-II cytoplasmic loop) of human Cav1.2 (also known as voltage-dependent L-type calcium channel subunit alpha-1C, CACNA1C, accession number Q13936)

Mouse: 100% identity (14/14 amino acids identical)

Rat: 100% identity (14/14 amino acids identical)

Monoclonal antibody info:

Mouse strain: Balb/C

Myeloma cell: SP2/0

Mouse Ig Isotype: IgG1

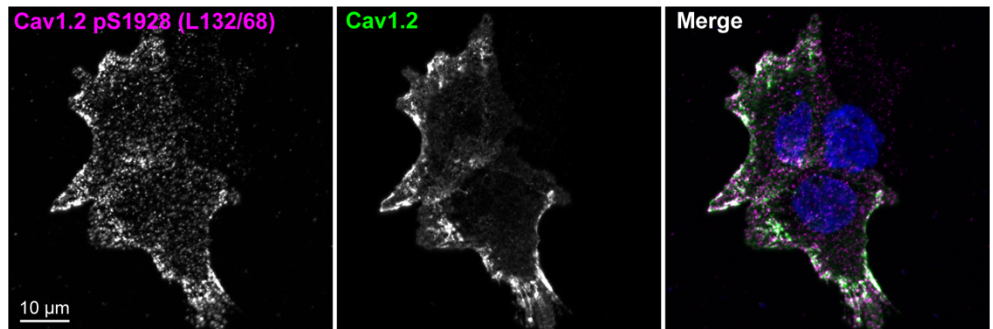
NeuroMab Applications:

Immunocytochemistry

Species Reactivity: human, mouse, rat, rabbit

MW: 240 kDa

An HEK293T cell expressing exogenous rabbit Cav1.2 α 1 subunit immunolabeled with anti-Cav1.2 pS1928 mAb L132/68 (magenta), rabbit anti-Cav1.2 (green) and Hoechst 33258 nuclear stain (blue).



A dissociated mouse ventricular cardiomyocyte immunolabeled with anti-Cav1.2 pS1928 mAb L132/68 (green) and anti-Cav1.2 NeuroMab N263/31 (red).

