



Anti-PICK1 scaffold, NeuroMab clone L20/8

Immunogen:

Fusion protein amino acids 10-130 of human PICK1 (also known as Protein interacting with C kinase 1, Protein kinase C-alpha-binding protein, PRKCA-binding protein and Prkcbp, accession number Q9NRD5)

Rat: 100% identity (121/121 amino acids)

Mouse: 99% identity (120/121 amino acids)

Monoclonal antibody info:

Mouse strain: Balb/C

Myeloma cell: SP2/0

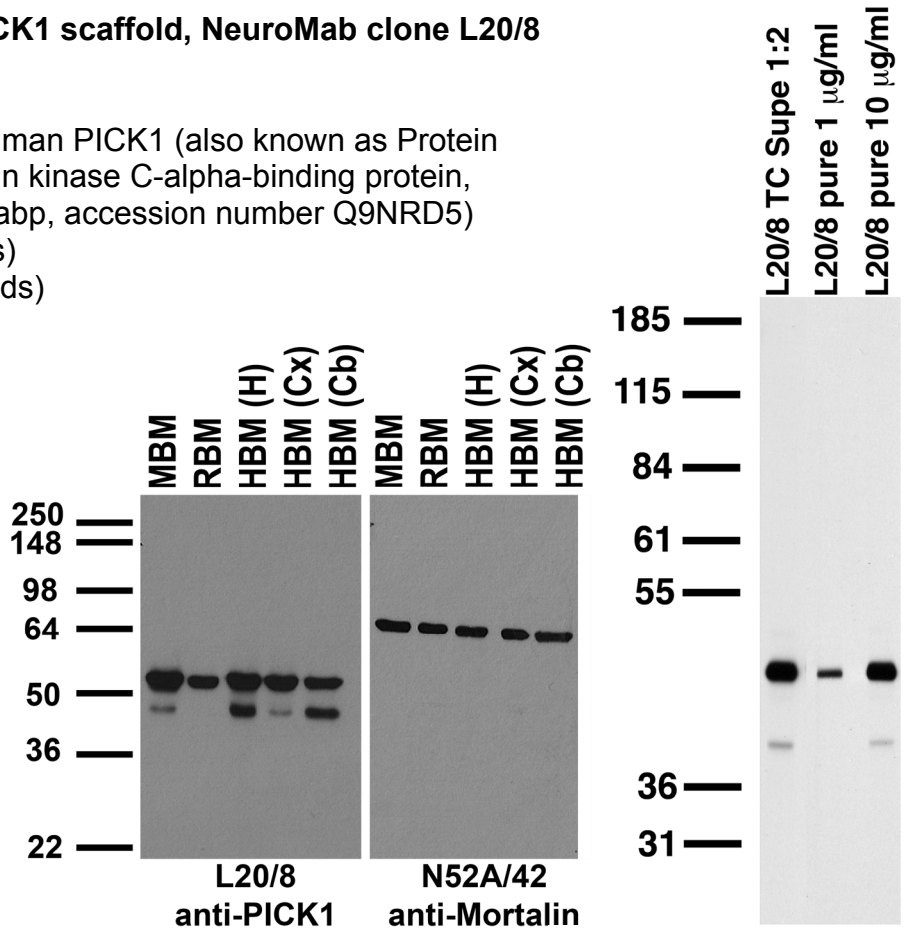
Mouse Ig Isotype: IgG2a

NeuroMab Applications:

Immunoblot, Immunocytochemistry, Immunohistochemistry and Immunoprecipitation

Species Reactivity: human, rat, mouse

MW: 45 kDa



Top left: immunoblot against crude membrane fractions from whole mouse (MBM) or rat (RBM) brain and from human hippocampus [HBM(H)], cerebral cortex [HBM(Cx)] or cerebellum [HBM(Cb)] and probed with L20/8 (left) or N52A/42 (right) TC supe.

Top right: adult rat brain membrane immunoblot

Bottom left: adult rat hippocampus immunohistochemistry

Bottom right: immunoblot against membrane fractions from adult rat brain (RBM) and hippocampi (MHM) from wild-type (WT) and PICK1 knockout (KO) mice probed with L20/8 TC supe. Mouse samples courtesy of Richard Haganir (Johns Hopkins University, HHMI).

