

**Anti-Botch1/Chac1, NeuroMab clone N116/14**

Available as TC supe (RRID: AB\_10671697) &amp; Pure IgG (RRID: AB\_2079324)

Immunogen:

Fusion protein amino acids 1-222 (full-length) of rat Botch1 (also known as Cation transport regulator-like protein 1 or Chac1, accession number XM\_342497.1)

Mouse: 96% identity (215/222 amino acids identical)

Human: 89% identity (198/222 amino acids identical)

&gt;50% identity with Botch2/Chac2

Monoclonal antibody info:

Mouse strain: Balb/C

Myeloma cell: SP2/0

Mouse Ig Isotype: IgG1

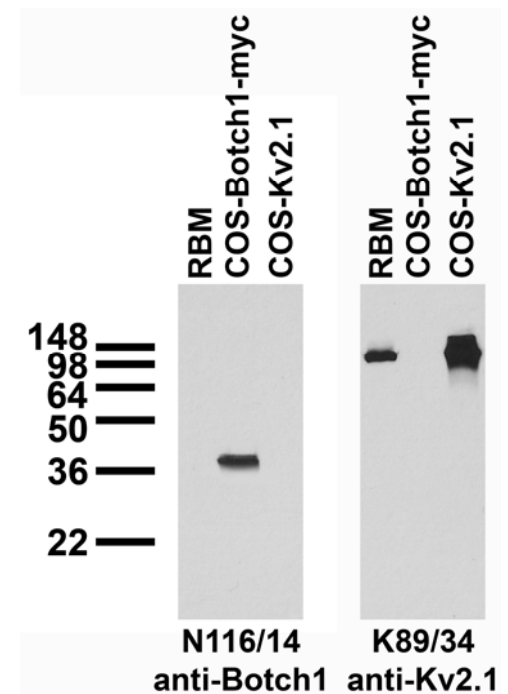
NeuroMab Applications:

Immunoblot and Immunocytochemistry

Species Reactivity: rat, mouse, human

No cross-reactivity against Botch2/Chac2

MW: 25 kDa

Adult rat brain membrane (RBM) and transfected cell immunoblot:  
extracts of RBM and COS cells transiently transfected with Myc-tagged Botch1 and untagged Kv2.1 plasmids and probed with N116/14 (left panel) and K89/34 (right panel) TC supe.

Adult rat hippocampus immunohistochemistry

