

**Anti-Doc2b, NeuroMab clone N150/21**

Available as TC supe (RRID: AB_2277497) & Pure IgG (RRID: AB_2315830)

Immunogen:

Fusion protein amino acids 1-216 (N-terminus) of rat Doc2b (also known as Double C2-like domain-containing protein beta and Doc2-beta, accession number P70610)

Mouse: 97% identity (210/216 amino acids identical)

Human: 93% identity (203/169 amino acids identical)

<60% identity with Doc2a

Monoclonal antibody info:

Mouse strain: Balb/C

Myeloma cell: SP2/0

Mouse Ig Isotype: IgG1

NeuroMab Applications:

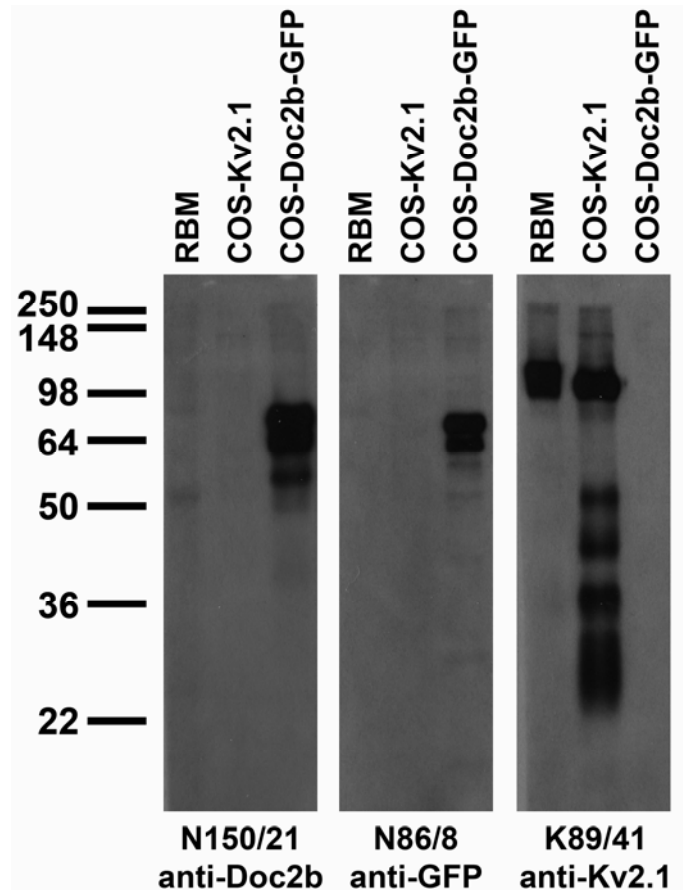
Immunoblot, Immunocytochemistry and Immunohistochemistry

Species Reactivity: rat, mouse

Does not cross-react with Doc2a

MW: 45 kDa

Adult rat brain membrane (RBM) and transfected cell immunoblot: extracts of RBM and COS cells transiently transfected with GFP-tagged Doc2b or untagged Kv2.1 plasmids and probed with N150/21 (left), N86/8 (middle) and K89/41 (right).



Adult rat hippocampus immunohistochemistry

