

**Anti-Mitofusin-2 (Mfn2), NeuroMab clone N153/5**

Available as TC supe (RRID: AB_10672973) & Pure IgG (RRID: AB_2297598)

Immunogen:

Fusion protein amino acids 370-600 (cytoplasmic N-terminus) of mouse Mitofusin-2 (also known as Transmembrane GTPase Mfn2, Hypertension-related protein 1, Mitochondrial assembly regulatory factor, Mitochondrial transmembrane GTPase FZO1A and Protein HSG, accession number Q80U63)

Rat: 97% identity (226/231 amino acids identical)

Human: 92% identity (214/231 amino acids identical)

~55% identity with Mitofusin-1

Monoclonal antibody info:

Mouse strain: Balb/C

Myeloma cell: SP2/0

Mouse Ig Isotype: IgG2a

NeuroMab Applications:

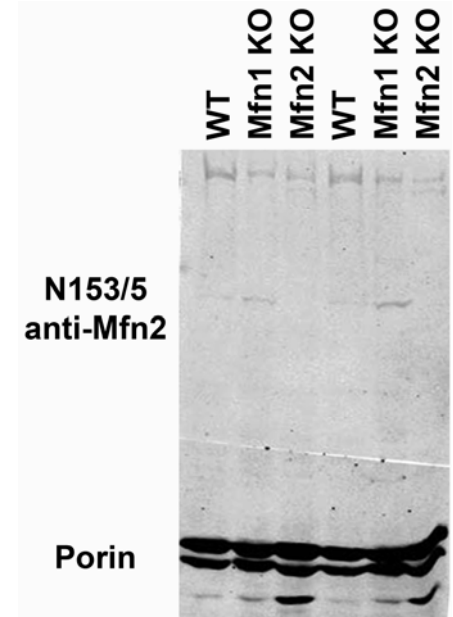
Immunoblot, Immunocytochemistry and Immunohistochemistry

Species Reactivity: mouse, rat

No cross-reactivity against Mitofusin-1

MW: 90 kDa

Immunoblot versus crude cardiac mitochondrial preps from WT, Mfn1 KO or Mfn2 KO mice and probed with N153/5 TC supe (top) and Porin antibody (bottom). Data courtesy of Dr. Suzanne Hoppins, Dr. Laura Lackner and Dr. Jodi Nunnari, UC Davis.



Adult rat hippocampus immunohistochemistry

