



Anti-Pan-Gamma-protocadherin, NeuroMab clone N159/5

Available as TC supe (RRID: AB_10676098) & Pure IgG (RRID: AB_2159449)

Immunogen:

Fusion protein corresponding to amino acids 808-931 (C-terminal cytoplasmic constant domain) of mouse Gamma-protocadherin-A1 that is shared by all 22 Gamma-protocadherins (A subfamily amino acids ~807-930, B subfamily amino acids ~789-912 and C subfamily amino acids ~818-941)
 Human: 99% identity (123/124 amino acids identical)

Monoclonal antibody info:

Mouse strain: Balb/C
 Myeloma cell: SP2/0
 Mouse Ig Isotype: IgG1

NeuroMab Applications:

Immunoblot, Immunohistochemistry

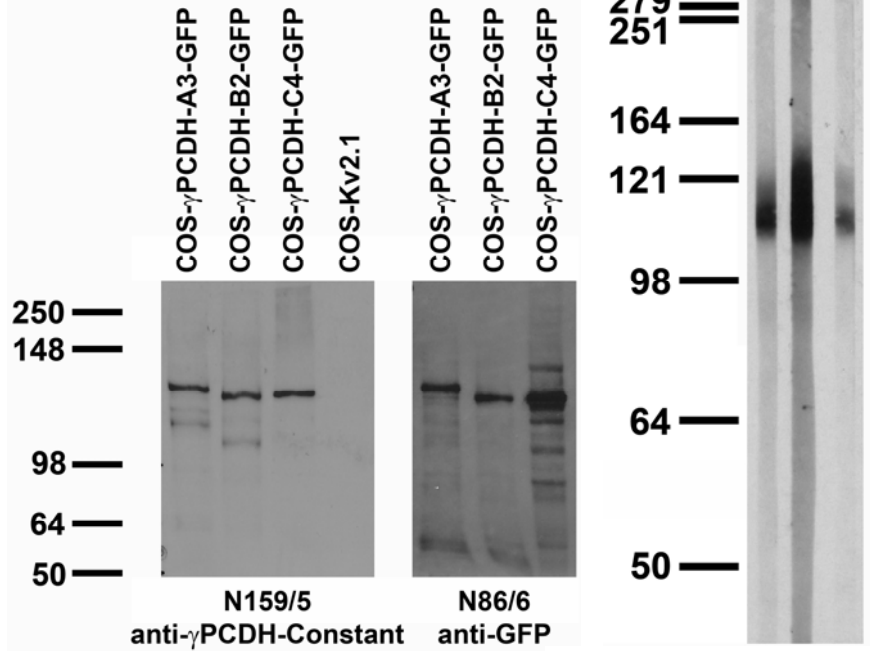
Species Reactivity: mouse

Cross-reacts with all Gamma-protocadherin-A, -B and -C proteins

MW: 100 kDa

Top right: adult rat brain membrane immunoblot

Top left: transfected cell immunoblot: extracts of COS cells transiently transfected with GFP-tagged Gamma-protocadherin-A3, -B2 and -C4 and untagged Kv2.1 plasmids and probed with N159/5 (left) and N86/8 (right) TC supe.



Bottom: immunostaining of spinal cord samples (left panel) and immunoblot versus brain samples (right panel) from WT and Gamma-protocadherin KO mice with N159/5 TC supe. Data courtesy of Joshua Weiner, University of Iowa.

