

**Anti-Pan-FHF-A, NeuroMab clone N235/22**Immunogen:

Synthetic peptide amino acids 2-18 (AAAIASSLIRQKRQARE) of human FHF2A  
(also known as Fibroblast growth factor homologous factor 2A, Fibroblast  
growth factor 13A and FGF13A, accession number Q92913)

Rat: 100% identity (17/17 amino acids identical)

Mouse: 94% identity (16/17 amino acids identical)

>80% identity with FGF12A/FHF1A, FGF14A/FHF4A and FGF11A/FHF3A

Monoclonal antibody info:

Mouse strain: Balb/C

Myeloma cell: SP2/0

Mouse Ig Isotype: IgG2b

NeuroMab Applications:

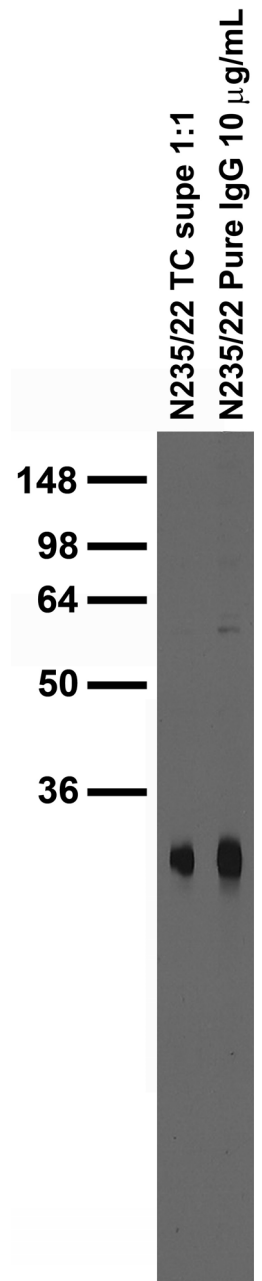
Immunoblot, Immunocytochemistry and Immunohistochemistry

Species Reactivity: human, rat, mouse

Cross-reacts with FGF12A/FHF1A and FGF14A/FHF4A

Does not cross-react with FGF13B/FHF2B

MW: 30 kDa



Adult rat brain membrane immunoblot

Adult rat hippocampus immunohistochemistry

