

### Anti-Lgi1, NeuroMab clone N283/7

#### Immunogen:

Fusion protein amino acids 37-113 (LRRNT domain and first LRR repeat) of mouse Lgi1 (also known as Leucine-rich glioma-inactivated protein 1, Epitempin-1, EPT and UNQ775/PRO1569, accession number Q9JIA1)

Rat: 100% identity (77/77 amino acids identical)

Human: 98% identity (76/77 amino acids identical)

~50% identity with Lgi2, Lgi3 and Lgi4

#### Monoclonal antibody info:

Mouse strain: Balb/C

Myeloma cell: SP2/0

Mouse Ig Isotype: IgG2a

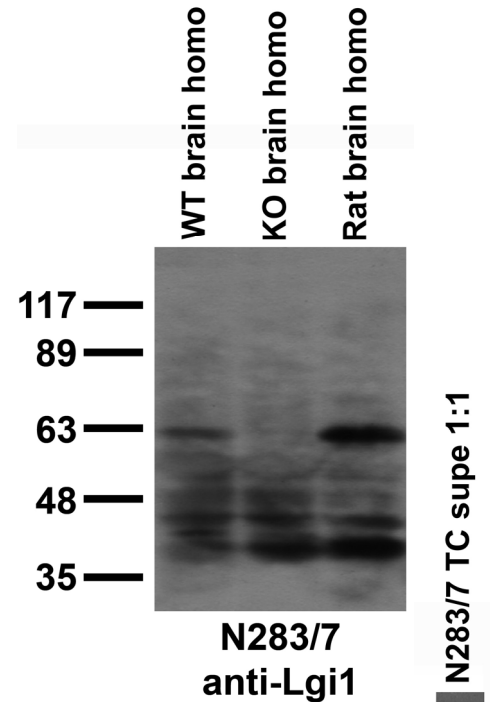
#### NeuroMab Applications:

Immunoblot, Immunocytochemistry, Immunohistochemistry

Species Reactivity: mouse, rat, human

Does not cross-react with Lgi2, Lgi3 or Lgi4 (based on KO validation results)

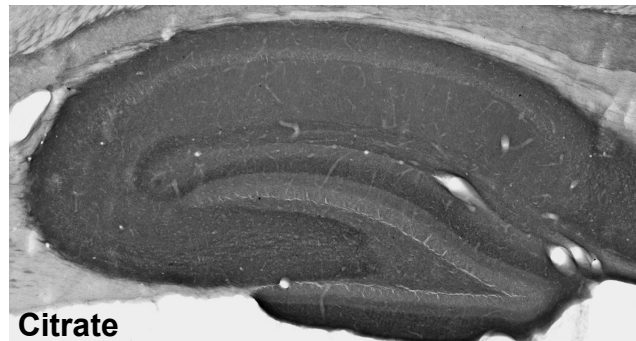
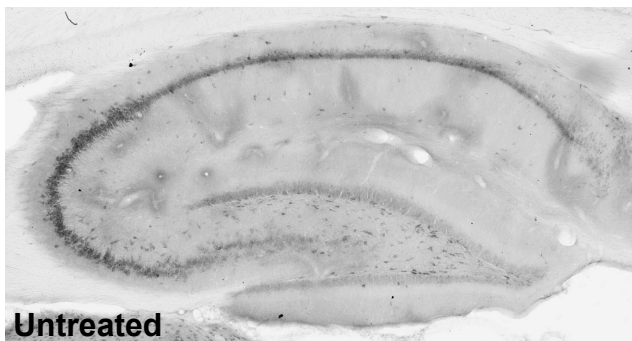
MW: 60 kDa



Top: immunoblot versus whole brain homogenates (homo) from adult rat and WT and Lgi1 KO mouse probed with N283/7 TC supe. Data courtesy of Masaki Fukata (National Institute for Physiological Sciences, Japan).

Right: adult rat brain membrane immunoblot

Bottom: adult rat hippocampus immunohistochemistry under standard protocol (left) and with antigen retrieval via citrate pretreatment (right).



251 —  
164 —  
121 —  
98 —  
64 —  
50 —  
36 —

N283/7 TC supe 1:1