

Anti-VGlut2, NeuroMab clone N29/29

Available as TC supe (RRID: AB_10698039) & Pure IgG (RRID: AB_2239153)

Immunogen:

Fusion protein amino acids 501-582 (cytoplasmic C-terminus) of rat VGlut2 (also known as Vesicular glutamate transporter 2, Differentiation-associated BNPI, Differentiation-associated Na(+)-dependent inorganic phosphate cotransporter, Dnpi, Solute carrier family 17 member 6 and Slc17a6, accession number Q9J112)

Mouse: 97% identity (80/82 amino acids identical)

Human: 89% identity (73/82 amino acids identical)

<50% identity with VGlut1 or VGlut3

Monoclonal antibody info:

Mouse strain: Balb/C

Myeloma cell: SP2/0

Mouse Ig Isotype: IgG1

NeuroMab Applications:

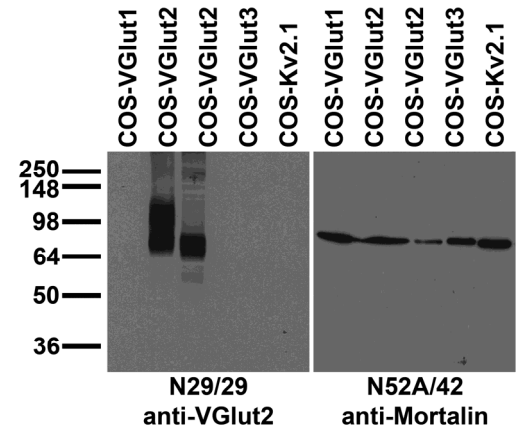
Immunoblot, Immunocytochemistry and Immunohistochemistry

Species Reactivity: rat, mouse

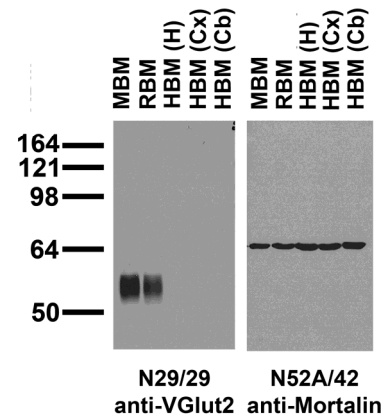
Does not cross-react with VGlut1 or VGlut3

MW: 60 kDa

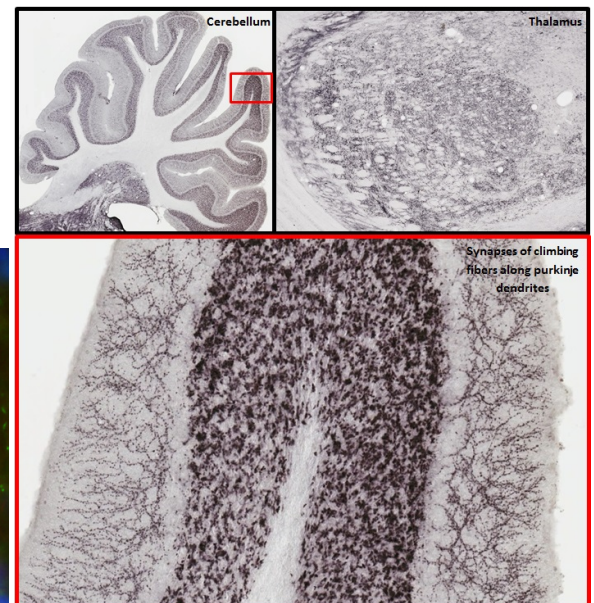
Top: transfected cell immunoblot: extracts of COS cells transiently transfected with untagged VGlut1, VGlut2, VGlut3 or Kv2.1 plasmid and probed with N29/29 (left) or N52A/42 (right) TC supe.



Middle: immunoblot versus crude brain membranes from adult mouse (MBM), rat (RBM) and human hippocampus [HBM(H)], cerebral cortex [HBM(Cx)] and cerebellum [HBM(Cb)] probed with N29/29 (left) and N52A/42 (right) TC supe.



Bottom right: adult rat cerebellum and thalamus immunohistochemistry



Bottom left: immunofluorescence staining of adult rat cerebellum with N29/29 (green), N326D/2 (red) and Hoechst nuclear stain (blue).

