



**Anti-REEP, NeuroMab clone N326D/13**

**Immunogen:**

Fusion protein amino acids 111-254 (cytoplasmic C-terminus) of mouse REEP2 (also known as Receptor expression-enhancing protein 2, C5orf19, SGC32445 and LOC682105, accession number Q8VCD6)

Rat: 97% identity (140/144 amino acids identical)

Human: 86% identity (125/144 amino acids identical)

<40% identity with REEP1 and REEP4 but >65% identity for first 46 amino acids (RDKSYETMMRVGKRGLNLAANA AVTAAAKGQGVLSEKLRSFSMQDL)

**Monoclonal antibody info:**

Mouse strain: Balb/C

Myeloma cell: SP2/0

Mouse Ig Isotype: IgG1

**NeuroMab Applications:**

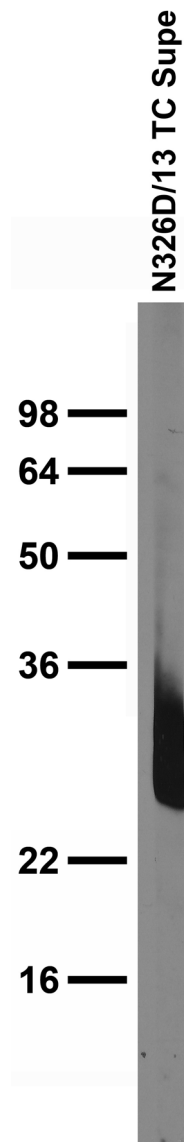
Immunoblot, Immunocytochemistry and Immunohistochemistry

Species Reactivity: mouse, rat

Cross-reacts with REEP1

Cross-reacts with other unidentified proteins

MW: 30 kDa



Adult rat brain membrane immunoblot

Adult rat brain  
immunohistochemistry

