

Anti-Beta1-spectrin, NeuroMab clone N385/21

Immunogen:

Fusion protein amino acids 1555-2137 (C-terminal repeats 13 to 17) of human Beta1-spectrin (also known as Erythrocytic spectrin beta chain, SPTB, SPTB1, Spnb-1, Spnb1 and LOC314251, accession number P11277)

Mouse: 90% identity (530/538 amino acids identical)

Rat: 90% identity (530/538 amino acids identical)

>50% identity with Beta2-spectrin

Monoclonal antibody info:

Mouse strain: Balb/C

Myeloma cell: SP2/0

Mouse Ig Isotype: IgG2b

NeuroMab Applications:

Immunoblot, Immunocytochemistry and Immunohistochemistry

Species Reactivity: human, rat, mouse

MW: 250 kDa

Top left: adult rat hippocampus (top) and thalamus (bottom) immunohistochemistry

Right: adult rat brain membrane immunoblot

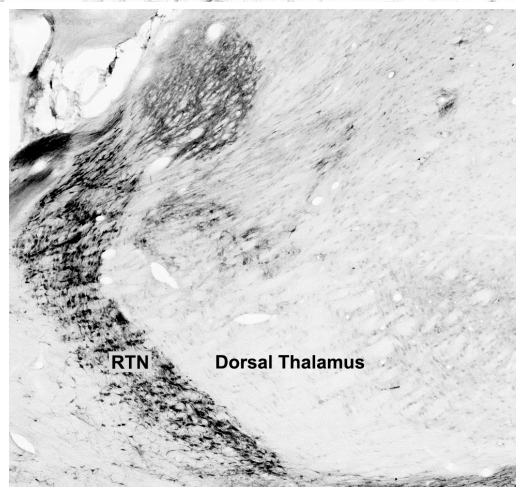
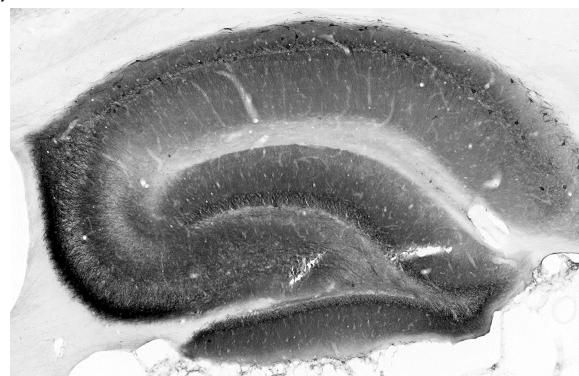
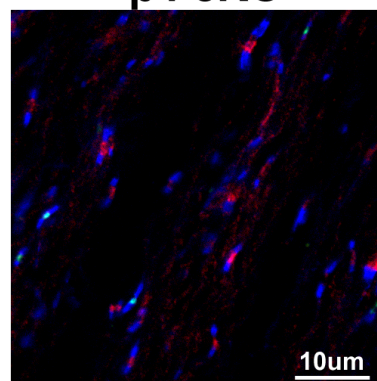
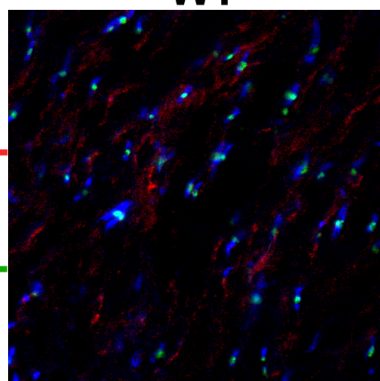
Bottom left: immunofluorescence staining of optic

nerve from adult Beta4-spectrin wild-type (WT) and conditional knockout (cKO) mice with N385/21 (Beta1-spectrin, red), Beta4-spectrin antibody (green) and Neurofascin antibody (blue). Images courtesy of Cheng-Hsin Liu and Matt Rasband (Baylor College of Medicine).

Neurofascin
β4 β1

WT

β4 cKO



500 —
251 —
164 —
121 —
98 —
64 —
50 —
36 —

N385/21 TC supe