

Anti-Ataxin-1 wild-type, NeuroMab clone N65/37

Available as TC supe (RRID: AB_10675131) & Pure IgG (RRID: AB_10675132)

Immunogen:

Synthetic peptide amino acids 746-761 (RKRRRWSAPETRKLEK) of mouse ataxin-1 (also known as spinocerebellar ataxia type 1 protein homolog, accession number P54254)

Rat: 93% identity (15/16 amino acids identical)

Human: 87% identity (14/16 amino acids identical)

Monoclonal antibody info:

Mouse strain: Balb/C

Myeloma cell: SP2/0

Mouse Ig Isotype: IgG1

NeuroMab Applications:

Immunoblotting and Immunocytochemistry

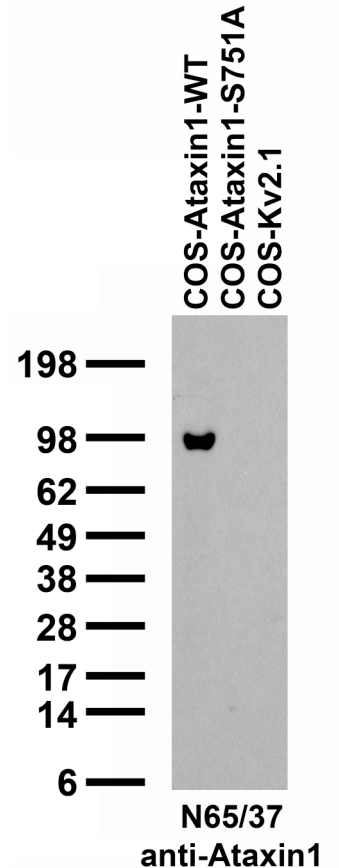
Species Reactivity: human, mouse, rat

No cross-reactivity against phosphoS751-Ataxin-1

Minimal cross-reactivity against S751A mutant of Ataxin-1 by ELISA and immunofluorescence and negative by immunoblot (right)

MW: 85 kD

Transfected cell immunoblot: extracts of COS-1 cells transfected with Ataxin-1-WT, Ataxin-1-S751A or Kv2.1 plasmid and probed with N65/37 TC supe.



Adult rat cerebellum (left) and hippocampus (right) immunohistochemistry

