**Anti-Ataxin-1 11NQ, NeuroMab clone N76/3****Immunogen:**

Synthetic peptide amino acids 164-197 (ATTPSQRSQLEAYSTLLANMGSLSQAPGHKVEPP) of mouse ataxin-1 (also known as spinocerebellar ataxia type 1 protein homolog, accession number P54254)

Rat: 100% identity (34/34 amino acids identical)

Human: 88% identity (30/34 amino acids identical)

**Monoclonal antibody info:**

Mouse strain: Balb/C

Myeloma cell: SP2/0

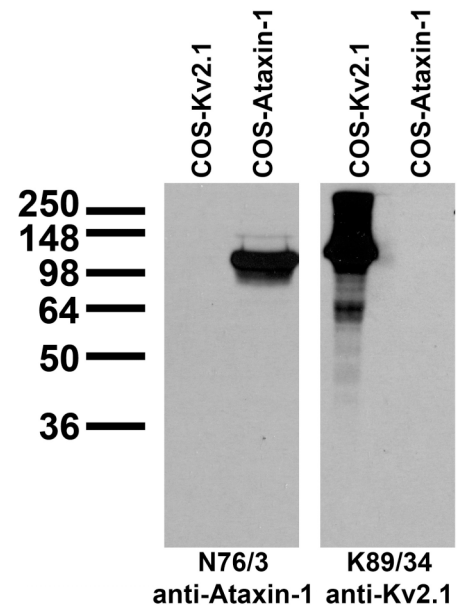
Mouse Ig Isotype: IgG1

**NeuroMab Applications:**

Immunoblotting, Immunohistochemistry and Immunoprecipitation

Species Reactivity: human, mouse, rat

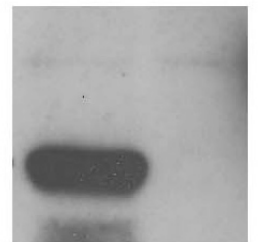
MW: 85 kD



Top right: transfected cell immunoblot: COS cells transiently transfected with Kv2.1 and Ataxin-1 plasmids and probed with N76/3 (left panel) and K89/34 (right panel) TC supe.

Bottom right: adult mouse brain immunoblot: extracts of cerebella from Ataxin-1 KO and WT mice and probed with N76/3 TC supe. Image courtesy of Drs. Paymaan Jafad-Nejad and Huda Zoghbi, Baylor College of Medicine.

WT KO



Adult rat cerebellum (left) and hippocampus (right) immunohistochemistry.

