



Anti-Cav β 1 calcium channel, NeuroMab clone N7/18

Immunogen:

Synthetic peptide amino acids 19-34 (PMEVFDPSPQGKYSKR) of human Cav β 1 (also known as Voltage-dependent L-type calcium channel subunit beta-1, Calcium channel voltage-dependent subunit beta 1, Cacnb1, Cacnlb1 and CAB1, accession number Q02641)

Rat: 100% identity (16/16 amino acids identical)

Mouse: 100% identity (16/16 amino acids identical)

100% identity between all Cav β 1 splice variants

<50% identity with Cav β 2, Cav β 3 and Cav β 4

Monoclonal antibody info:

Mouse strain: Balb/C

Myeloma cell: SP2/0

Mouse Ig Isotype: IgG2a

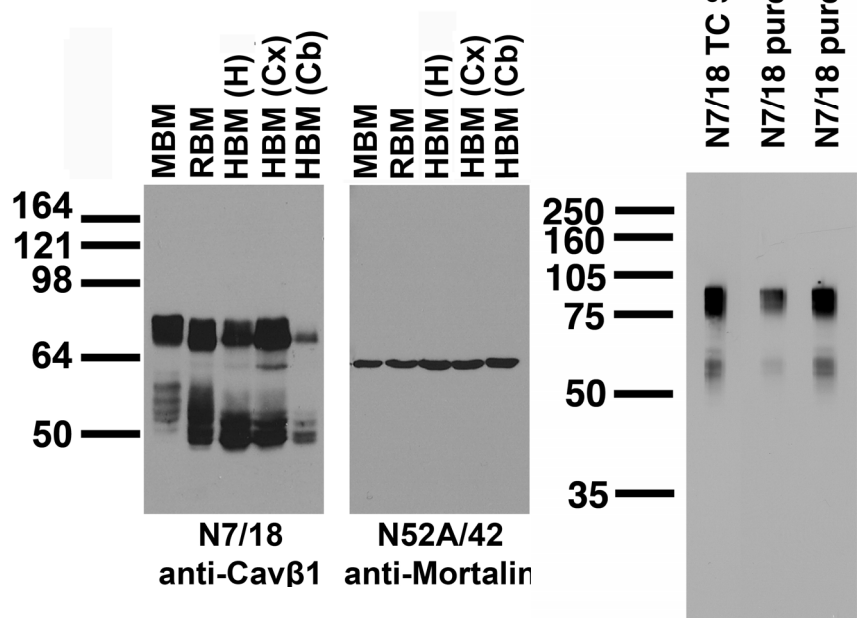
NeuroMab Applications:

Immunoblot, Immunohistochemistry and Immunoprecipitation

Species Reactivity: human, rat, mouse

Does not cross-react with Cav β 2, Cav β 3 or Cav β 4

MW: 80, 55 kDa



Top left: immunoblot against crude membrane fractions from whole mouse (MBM) or rat (RBM) brain and from human hippocampus [HBM(H)], cerebral cortex [HBM(Cx)] or cerebellum [HBM(Cb)] and probed with N7/18 (left) or N52A/42 (right) TC supe.

Top right: adult rat brain membrane immunoblot

Bottom: adult rat hippocampus (left) and whole brain (right) immunohistochemistry

