



### Anti-GIT2 scaffold protein, NeuroMab clone N83/48

Available as TC supe (RRID: AB\_10672302) & Pure IgG (RRID: AB\_2110013)

#### Immunogen:

Fusion protein amino acids 450-759 (C-terminus) of human GIT2 (also known as ARF GTPase-activating protein, G protein-coupled receptor kinase-interactor 2, GRK-interacting protein 2, Cool-interacting tyrosine-phosphorylated protein 2 and CAT2, accession number Q14161)

Mouse: 88% identity (263/298 amino acids identical)

<50% identity with GIT1

#### Monoclonal antibody info:

Mouse strain: Balb/C

Myeloma cell: SP2/0

Mouse Ig Isotype: IgG1

#### NeuroMab Applications:

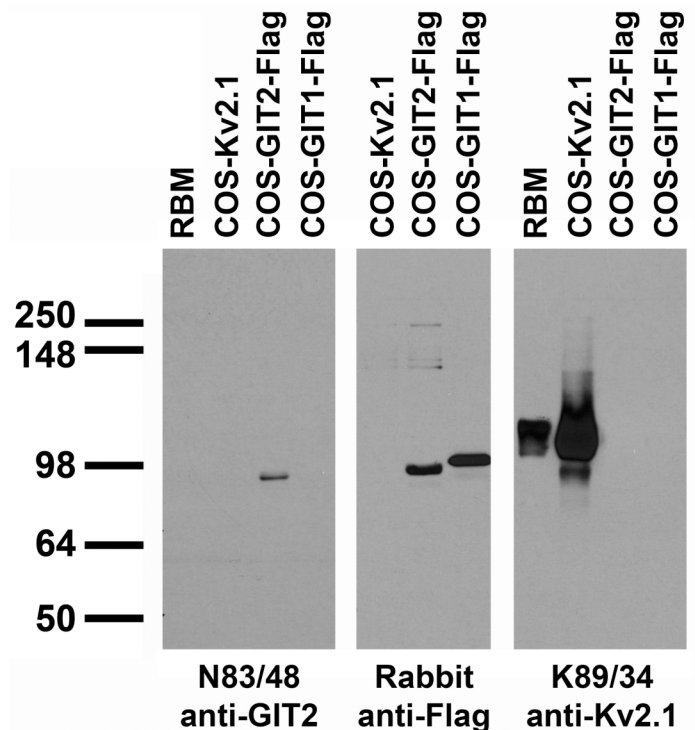
Immunoblotting, Immunohistochemistry and Immunoprecipitation

Species Reactivity: human, mouse, rat

No cross-reactivity against GIT1

MW: 85 kD

Transfected cell immunoblot: extracts of rat brain membranes (RBM) and COS cells transiently transfected with Flag-tagged GIT1 and GIT2 and untagged Kv2.1 plasmids and probed with N83/48 (left) and K89/41 (right) TC supe and with anti-Flag antibody (middle).



Adult rat hippocampus immunohistochemistry

